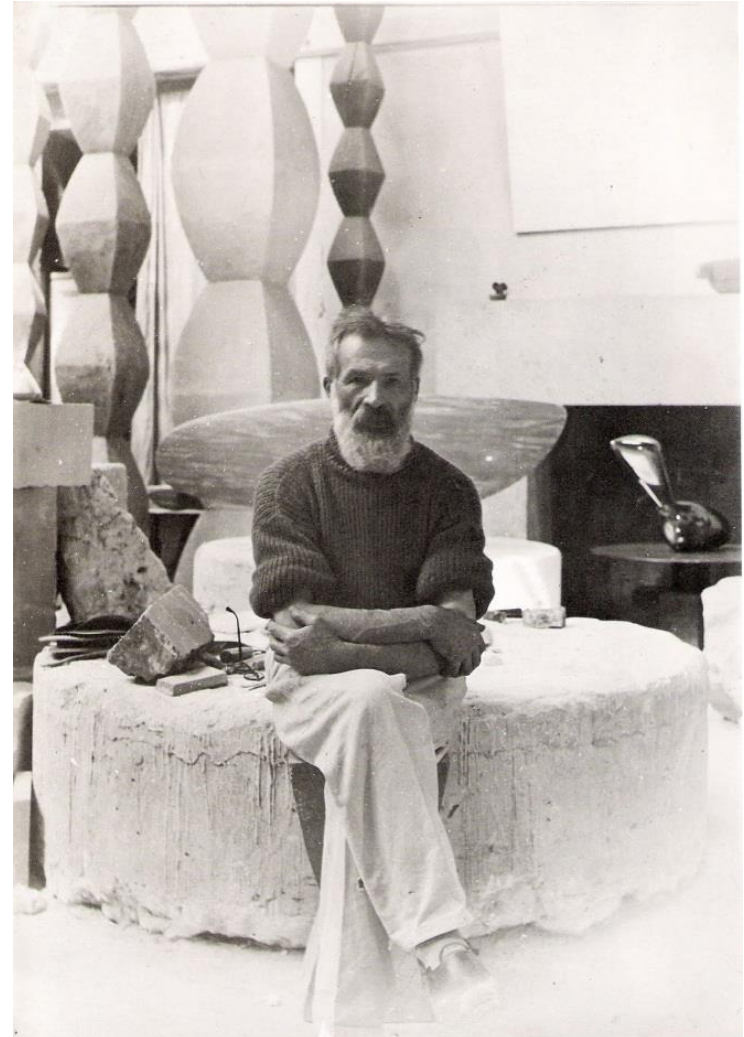


# Constantin Brâncuși - „Simplicity as a principle“

**Diana Carina Azoitei**



# Constantin Brâncuși – Biography

- \*1876: Hobița/Târgu Jiu, Romania
- Art Academy Bucuresti
- 1904: Studies in Paris
- Was friends with Auguste Rodin
- †1957: Paris, France



**»Simplicity is not the goal – it is the way through which we can ascertain the true meaning of things.«**

# Inspiration and Methods of Artistic Expression

- Inspired by prehistoric and African art
- Simplicity
- Basic element: The egg



Venus of Willendorf



African sculptures

## **The infinite column**

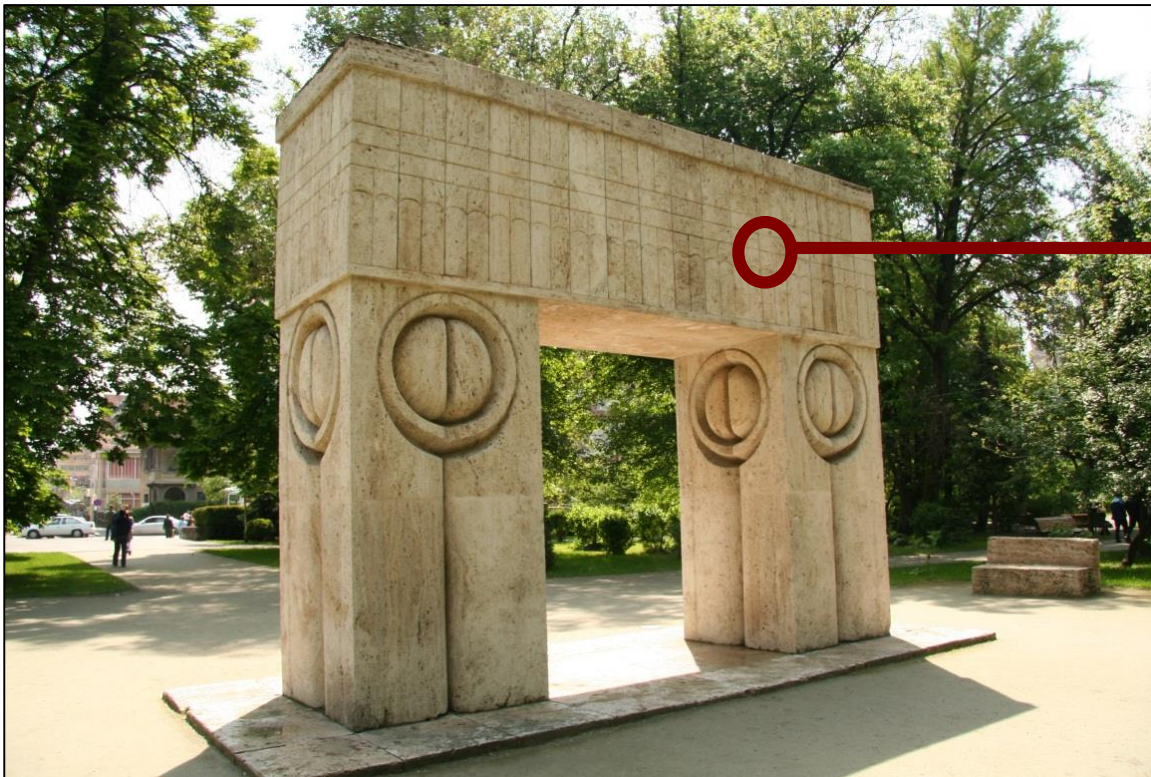
- 15 diamond-shaped elements that reach 30m into the sky
- In memory of the fallen Romanian soldiers of WW I
- To be demolished during the communist era
- One of the most endangered artistic works in the world





## *The Gate of the Kiss*

- Sculpture presenting the kiss
- Re-occurring kiss motif on all sides and surfaces



## Bird in the Room (1923 - 1940)

- 14 different representations of an abstract bird
- Slim, dynamic
- Monument of freedom

### Meaning:

- Connection between life on earth and eternal sky
- Sky = Freedom



## Slumbering Muse (1910)

- Famous egg shape
- Heavily reduced forms
- Impression of an elegant female



### Effect:

- Symbolises silence and tranquility
- Invitation to enter her dream-world



## The Kiss (1907 - 1908)

- Two figures melting together
- Clear structures can still be observed

### Meaning:

- Human closeness
- People wish to protect each other and not let go of one another

